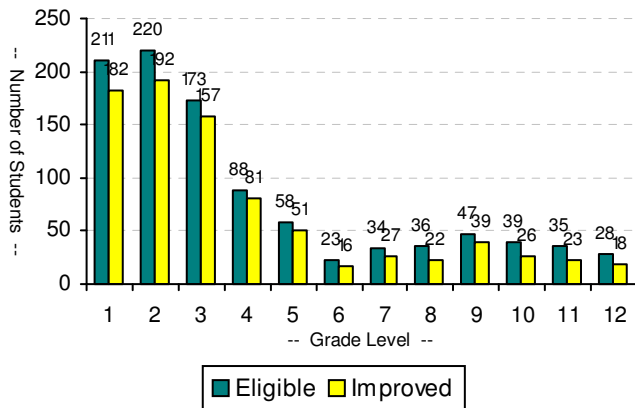
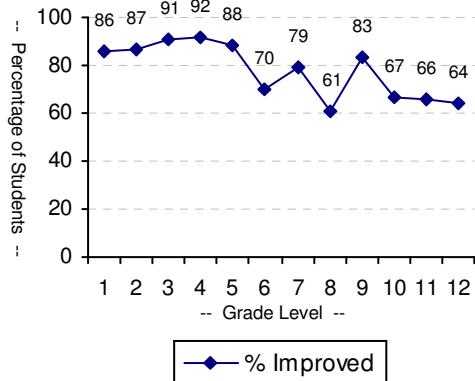


**Chart 1A - # of Students Improving**

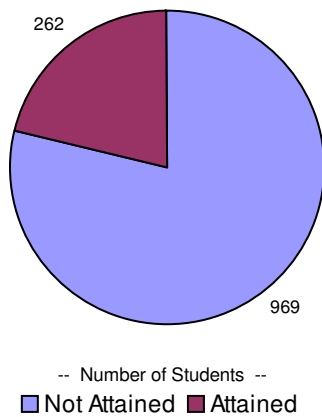


**Chart 1B - % of Students Improving**



District Summary All Grades	
Eligible:	1,004
Improved:	845
AMAO1 Per Cent Improved:	
<b>84.2%</b>	
AMAO1 Target: 79%	

**Chart 2A - Proficiency Attained In Four Yrs Or Less**

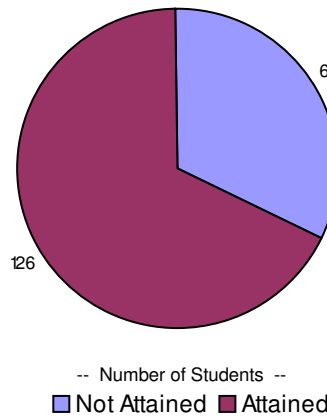


AMAO Pct Proficient:

**21.3%**

AMAO2 Target: 5%

**Chart 2B - Proficiency Attained In Five Yrs Or More**

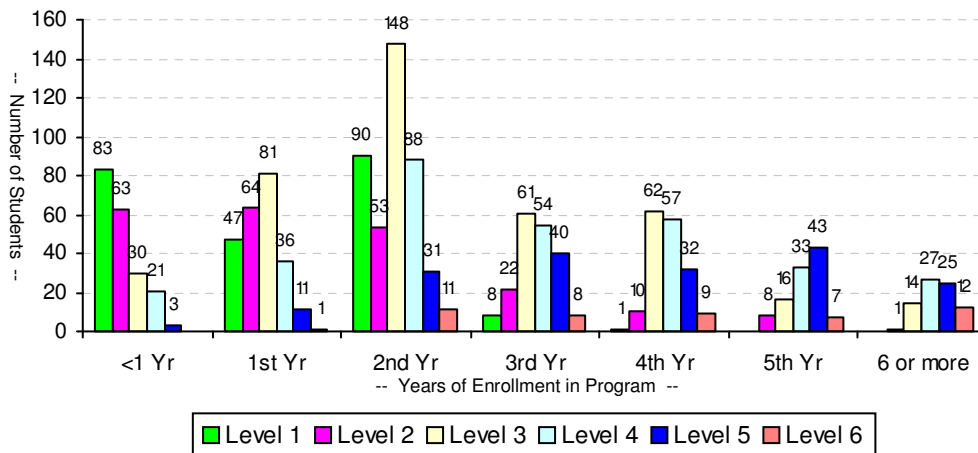


AMAO Pct Proficient:

**67.7%**

AMAO2 Target: 50%

**Chart 3 - Proficiency Levels By Years In District**



District Summary of Proficiencies	
Level 1:	230
Level 2:	223
Level 3:	414
Level 4:	317
Level 5:	185
Level 6:	48
Enrollment	1,417

**AMAO1:** Annual Measurable Achievement Objective for LEP Students Making Progress in Acquiring English Language Proficiency for 2012-2013 School Year  
**AMAO2:** AMAO for LEP Students in Attaining English Language Proficiency in Two Cohorts: Up to Four Full Years in Program or Five or More Full Years in Program