

ESL/Bil Parent Meeting

February 25th, 2016.

Welcome

ESL/Bilingual Parent Meeting

- Music and Refreshments
- Welcome - Miss Featherston
- Immunizations - Mrs. Briggs
- State Testing Requirements - Mrs. Ramcharan/Mrs. Green
 - PARCC
 - ACCESS
 - AMAO
- ESL After School Program - Mrs. Ramcharan
- Bilingual Language Arts Song - Ms. Cawley's students
- Student Reader - Ashley Vega
- Ideas for Helping Students at Home
 - Duolingo - Miss Featherston/Mr. Ruiz
- Registration for After School Program
- Questions and Concerns
- Closing

Translation will
be provided by
Mr. Ruiz and
Ms. Diaz.



Immunizations

Test is in
English

What is PARCC?

The Partnership for Assessment of Readiness for College and Careers (PARCC) is a State Assessment. It is a high quality, computer-based K–12 assessment in Mathematics and English Language Arts/Literacy.

Who takes it?

All ESL/ Bilingual students who have been in the US
before July 1st 2015.

Test is in
English

What is ACCESS?

ACCESS for ELLs (Assessing Comprehension and Communication in English State-to-State for English Language Learners) is a secure large-scale English language proficiency assessment given to Kindergarten through 12th graders who have been identified as English language learners (ELLs). It is given annually in WIDA Consortium member states to monitor students' progress in acquiring academic English.

Who takes it?

All ESL/ Bilingual students

AMAO

Bilingual and ESL Program Evaluation Analysis 2013-2014 for 21 - 5210
School: 100

TRENTON
Dunn MS

Chart 1A - # of Students Improving

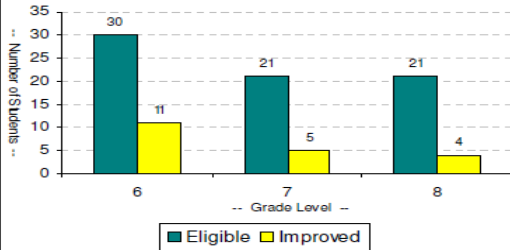
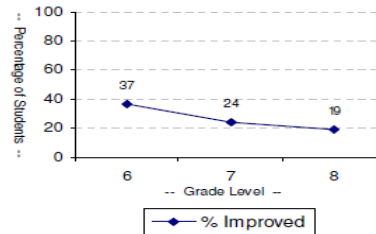
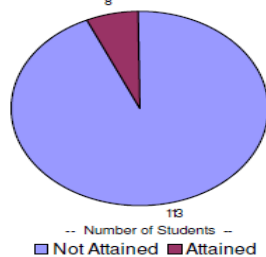


Chart 1B - % of Students Improving



School Summary All Grades	
Eligible:	72
Improved:	20
AMAO1 Per Cent Improved: 27.8%	
AMAO1 Target 59.00	

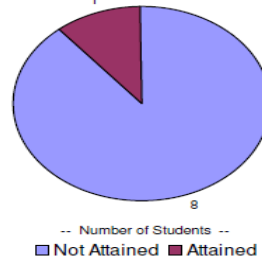
Chart 2A - Proficiency Attained In Four Yrs Or Less



AMAO Pct Proficient:
6.6%

AMAO2 Target: 5%

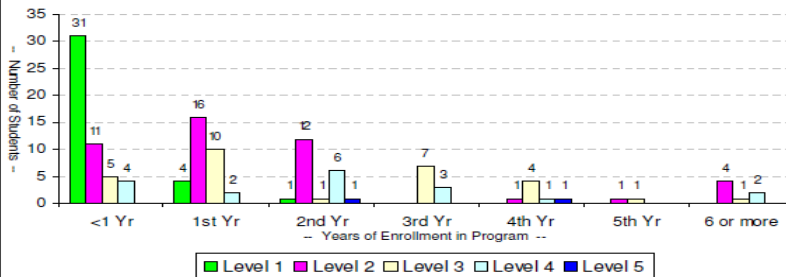
Chart 2B - Proficiency Attained In Five Yrs Or More



AMAO Pct Proficient:
11.1%

AMAO2 Target: 50%

Chart 3 - Proficiency Levels By Years In District



School Summary of Proficiencies	
Level 1:	36
Level 2:	45
Level 3:	29
Level 4:	18
Level 5:	2
Level 6:	0
Enrollment:	130

AMAO1: Annual Measurable Achievement Objective for LEP Students Making Progress in Acquiring English Language Proficiency for 2013-2014 School Year
AMAO2: AMAO for LEP Students in Attaining English Language Proficiency in Two Cohorts: Up to Four Full Years in Program or Five or More Full Years in Program
Prepared By: New Jersey Department of Education, Office of Title I

10/6/2014

District did not make AMAO 1 or 3

AMAO 1 Students increase by .5%

AMAO 3 Progress based on test preparation, graduation, attendance and achievement in reading and math.

ESL After-School Program

- Tuesday
- Wednesday
- Thursday

3-4:30

January 26th- June 2016

FREE

Homework – 30mins

Reading/Writing/Word Study/Vocabulary/ Math

1hr

Student Performance

How can you help your child?

Use websites

www.raz-kids.com

www.starfall.com

www.duolingo.com

www.eslgamesworld.com

<http://parcc.pearson.com/practice-tests/>

Have students use bilingual dictionaries

Encourage students to read and write in native language and English

Ask your child to explain their homework

Ask your child to teach you English

Watch TV shows in English

Listen to songs in English

Maneras de ayudar a mis hijos en casa

• Utilice los sitios web

www.raz-kids.com

www.starfall.com

www.duolingo.com

www.eslgamesworld.com

<http://parcc.pearson.com/practice-tests/>

- Haga que los estudiantes utilizan los diccionarios bilingües
- Anime a los estudiantes a leer y escribir en el idioma nativo e Inglés
- Pídale a su hijo que le explique su tarea
- Pídale a su hijo que le enseñe Inglés
- Ver la televisión muestra en Inglés
- Escuchar canciones en Inglés



**Questions or
Concerns?**